

Important Phone Numbers

Numeros de telefono importantes

MISSED GARBAGE COLLECTION
Recoleccion fallida de basura perdida

(209) 537-1500

SCHEDULE BULKY ITEM PICK-UP
Programa una cita para recoger articulos voluminosos

(209) 537-1500

BILLING QUESTIONS
Preguntas sobre facturacion

(209) 538-5757

STREET SWEEPING INFORMATION
Informacion de barrido de calles

(209) 538-5732

To start or stop garbage, organics, and/or recycling services,
please call the City of Ceres Utilities Department at
(209) 538-5757 or by email at customerservice@ci.ceres.ca.us.

For a missed cart collection pickup, please call Bertolotti
Disposal at (209)537-1500.



Bertolotti
DISPOSAL



The City of Ceres Solid Waste Disposal Guide & Recycling Schedule

City of Ceres
Public Works Department
2220 Hackett Road, Ceres, CA 95307
Phone: (209) 538-5732
Ceres.gov

Bertolotti Disposal
231 Flamingo Dr, Modesto, CA 95358
Phone: (209) 537-8000
bertolottidisposal.com

City of Ceres
Public Works Department
2220 Hackett Rd.
Ceres, CA 95307
(209) 538-5732

City of Ceres Solid Waste Disposal Guide

INSIDE THIS ISSUE:

Residential Service	1,2
Commercial Service	3,4
Residential Recycling Schedule	5,6
Special Wastes Disposal	7,8
Leaf & Limb Collection	9
City Programs & Events	10
Important Phone Numbers	Back

The City of Ceres has an exclusive franchise agreement with Bertolotti Disposal to collect garbage, recyclables, organics, bulky items, and leaf and limb piles within the city limits.

Residential customers utilize a 3-cart service. A black cart for garbage, a blue cart for recyclables, and a green cart for organics (yard and food waste).



USED OIL AND FILTERS

Ceres residents may dispose of used motor oil by using sealed container that is enclosed in a plastic zip lock bag. Place the container at the curbside near your blue recycling cart on your collection day.



For a missed cart collection pickup, please call Bertolotti Disposal at (209) 537-1500

Residential 3-Cart Collection Service

What Goes Where?

GARBAGE	RECYCLING	YARD WASTE/ FOOD SCRAPS
		
BLACK/GREY Garbage Diapers, Kitty Litter, Pet Wastes, Toothpaste Tubes, Light Bulbs (Non LED), Other Non-Recycleable or Non-Organic Waste	BLUE Recycle Cardboard & Paper Newspaper Aluminum Cans (rinsed) Glass bottles (rinsed) Plastic bottles & jugs	GREEN Organic Grass Clippings Shrubs, Weeds, Leaves Garden/Tree Pruning's Food Waste Food Soiled Paper
PLASTIC GARBAGE BAGS MAY BE USED TO COLLECT MATERIAL AND DISPOSED OF IN THE BLACK CART	DO NOT COLLECT MATERIAL IN PLASTIC GARBAGE BAGS. RECYCLABLES MUST FALL FREELY INTO THE CART	DO NOT COLLECT MATERIAL IN PLASTIC GARBAGE BAGS. BROWN PAPER BAGS OR BAGS LABELED COMPOSTABLE (NOT BIODEGRADABLE) MAY BE USED

Collected Weekly Collected Every Other Week Collected Weekly

To start or stop garbage, organics, and/or recycling services, please call the City of Ceres Utility Billing Division at (209) 538-5757 or by email customerservice@ci.ceres.ca.us.

Reminders for Residential Customers

- Please have your carts out the night before on your designated service day to avoid a return trip \$15.00 charge, and carts must be placed in the street and/or alley for pick-up.
- It is necessary that all items fall freely from your cart with lids completely closed.
- Carts are not to exceed 100lbs- No Dirt, Rock, Concrete, asphalt, hazardous, toxic, or e-waste.
- The trucks lifting arm needs at least three-feet on either side of the rolling cart to wrap around the container. Garbage carts must be placed three feet from other carts, recycling bins, and/or yard waste.
- Keep carts three-feet away from telephone poles, automobiles, mailboxes, basketball poles or other structures that will prevent the truck's lifting arm from grasping and lifting the carts to empty them into the truck.
- Be sure the opening of the lid is towards the street, and the cart handles facing your house. This allows the lid to open fully when the cart is tipped over and above the truck bay. If the hinge faces the wrong way the lid or hinges may be damaged and trash can spill out into the street.
- Place your cart away from low phone or electric wires, low hanging tree branches or other overhead obstructions. A twelve-foot vertical clearance is necessary for the truck's lifting arm to elevate the cart above the loading bay where it is emptied.
- Do not place carts behind parked cars, fire hydrants, trees or other obstructions or where access to them is blocked. The automated truck lifting arm is not able to reach behind trees or other objects. The efficiency of this system depends on the driver being able to remain in the truck.
- Be sure the cart is placed on a level surface, within three feet of the roads edge. The automated lifting arm when fully extended has a horizontal reach of only three-feet.

Commercial Collection Service and Programs

Mandatory Commercial Recycling and Organics Service for Businesses and Multi-family Residences

State mandates require businesses and multifamily residential dwellings, with 5 or more units, that generate 4 or more cubic yards of commercial solid waste per week to have recycling service. *Businesses in Ceres that meet the threshold for mandatory service will automatically be subscribed to recycling collection services at the 90-gallon cart level when starting garbage service. Increased levels are available at an increased rate if needed.*

As of 2022, SB 1383 requires every jurisdiction to provide organic waste collection services to all residents and businesses. City of Ceres businesses must subscribe to and participate in the City's organics curbside collection service provided by Bertolotti Disposal in order to comply with State mandates and City of Ceres disposal requirements. Additionally, SB 1383 requires businesses to provide separate collection containers for organic waste and recyclables in all areas where disposal containers are provided for customers, except in restrooms. However, if a business does not generate any of the materials that would be collected in a specific container, then it does not have to provide that particular container. Internal containers must conform to the proper color requirements or labeling requirements. To reduce contamination, businesses must also provide education to employees, contractors, tenants, and customers regarding how to properly sort organic material into the correct containers.



Construction & Demolition Waste (C&D)

The California Green Building Standards Code (CALGreen) requires new residential and non-residential building construction, demolition, and certain additions/alteration projects that are subject to City permitting requirements, to divert and salvage for reuse at least 65% of the nonhazardous construction and demolition waste generated during the project duration. Further, 100% of asphalt, concrete, and land-clearing debris must be recycled. All City of Ceres permit applicants must comply with the C&D recycling requirements. For non-residential additions or alterations to a building or tenant space, verification must be provided that all Universal Waste items are disposed of properly and diverted away from landfills.



To assist with compliance, the City of Ceres requires permit applicants to submit the Waste Management Plan prior to project start and a Waste Management Plan Report within 14 days after project completion.

For more information on the Green Building Code and the City of Ceres requirements for C&D recycling, visit the City's website at ceres.gov/1852/Construction-Demolition-Waste.

Edible Food Recovery

SB 1383 requires certain food businesses to donate the maximum amount of edible food they would otherwise dispose, to food recovery organizations. To reduce food waste and help address food insecurity, SB 1383 requires that by 2025 California will recover 20 percent of edible food that would otherwise be sent to landfills, to feed people in need. The law requires jurisdictions to establish food recovery programs and strengthen their existing food recovery networks. Food donors also must arrange to recover the maximum amount of their edible food that would otherwise go to landfills and food recovery organizations/services must maintain records.



Food Generators and Edible Food Recovery

SB 1383 requires all Tier 1 and Tier 2 food generators to donate the maximum amount of edible food that would have otherwise been sent to landfills to a food organization/service.

What is a Food Recovery Organization/Service?

SB 1383 requires Tier 1 and Tier 2 food generators to donate their excess edible food to a local food recovery organization/service, which includes, but is not limited to food banks, food pantries, soup kitchens, other non-profits that distribute food to people in need, food runners, and for-profit food recovery services.

What Tier 1 and Tier 2 Food Generators must do to comply with the law

Tier 1 and tier 2 food generators must donate the maximum amount of edible food to a food recovery organization as well as:

- Establish contracts or written agreements with food recovery organization/service
- Both food generator and food organization/service must keep a record of the following:
- Name and contact information of the food recovery organization/service accepting food donation
- Types of food being donated
- Frequency of food being donated
- Quantity of food being donated measured in pounds and recovered per month

These records are required to be made available at the store location during inspection.

For more info on Edible Food Recovery Compliance, visit the City's website at ceres.gov/1760/Edible-Food-Recovery

CAREIT

FOOD DONATION APP

Careit helps businesses comply with Senate Bill 1383, edible food donation requirements. Careit is free, simple to use, and helps feed those in need in your community.

EASY COMPLIANCE WITH CAREIT

As required by California Senate Bill 1383, designated Tier 1 & 2 businesses must:

- Donate all surplus edible food.
- Keep records of donation details.
- Keep a list of partner contacts.
- Hold written agreements with each partner.

Businesses that use Careit to donate the maximum amount of surplus edible food will automatically comply with each of these requirements for free.

DOWNLOAD THE CAREIT APP FOR FREE



COMPLIANCE ASSISTANCE

The City of Ceres Public Works Department is available to assist your business comply with solid waste, recycling, and organics requirements.

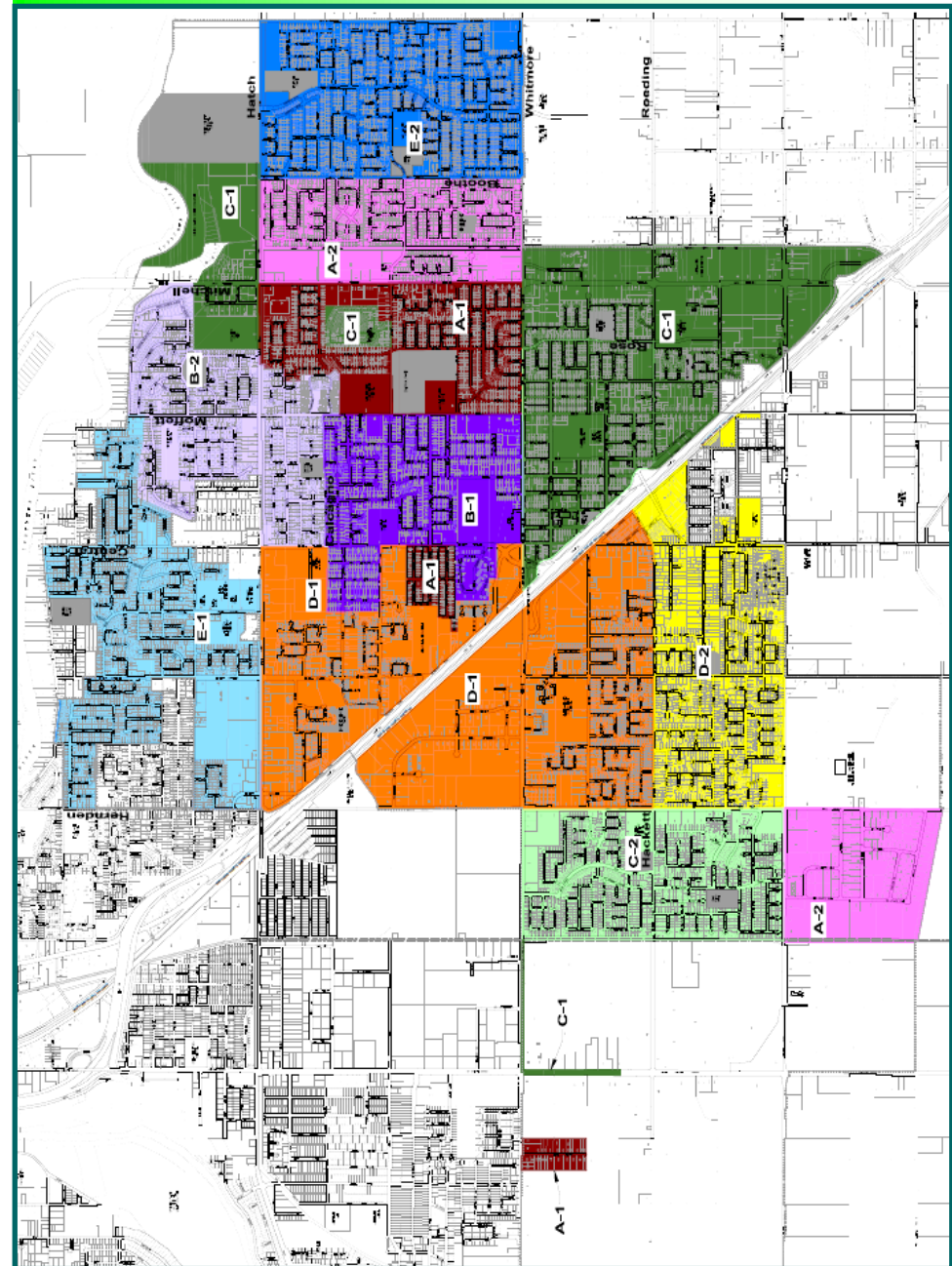
For more info on compliance assistance, please call (209) 538-5602.

2026 Residential Recycling Schedule

The schedule below corresponds with the map to the right. Locate your residence on the map to determine your route section and color code that corresponds with the schedule below.

January '26							February '26							March '26							<div>A-1 = MONDAY</div> <div>A-2 = MONDAY</div> <div>B-1 = TUESDAY</div> <div>B-2 = TUESDAY</div> <div>C-1 = WEDNESDAY</div> <div>C-2 = WEDNESDAY</div> <div>D-1 = THURSDAY</div> <div>D-2 = THURSDAY</div> <div>E-1 = FRIDAY</div> <div>E-2 = FRIDAY</div>
S	M	T	W	T	F	S	S	M	T	W	T	F	S	S	M	T	W	T	F	S	
							1	2	3	4	5	6	7	8	9	10	11	12	13	14	
4	5	6	7	8	9	10	15	16	17	18	19	20	21	22	23	24	25	26	27	28	
11	12	13	14	15	16	17	22	23	24	25	26	27	28	29	30	31					
18	19	20	21	22	23	24															
25	26	27	28	29	30	31															
April '26							May '26							June '26							
S	M	T	W	T	F	S	S	M	T	W	T	F	S	S	M	T	W	T	F	S	
5	6	7	8	9	10	11	3	4	5	6	7	8	9	7	8	9	10	11	12	13	
12	13	14	15	16	17	18	10	11	12	13	14	15	16	14	15	16	17	18	19	20	
19	20	21	22	23	24	25	17	18	19	20	21	22	23	21	22	23	24	25	26	27	
26	27	28	29	30			24	25	26	27	28	29	30	28	29	30					
							31														
July '26							August '26							September '26							
S	M	T	W	T	F	S	S	M	T	W	T	F	S	S	M	T	W	T	F	S	
5	6	7	8	9	10	11	2	3	4	5	6	7	8	6	7	8	9	10	11	12	
12	13	14	15	16	17	18	9	10	11	12	13	14	15	13	14	15	16	17	18	19	
19	20	21	22	23	24	25	16	17	18	19	20	21	22	20	21	22	23	24	25	26	
26	27	28	29	30	31		23	24	25	26	27	28	29	27	28	29	30				
							30	31													
October '26							November '26							December '26							
S	M	T	W	T	F	S	S	M	T	W	T	F	S	S	M	T	W	T	F	S	
							1	2	3	4	5	6	7								
4	5	6	7	8	9	10	8	9	10	11	12	13	14	6	7	8	9	10	11	12	
11	12	13	14	15	16	17	15	16	17	18	19	20	21	13	14	15	16	17	18	19	
18	19	20	21	22	23	24	22	23	24	25	26	27	28	20	21	22	23	24	25	26	
25	26	27	28	29	30	31	29	30						27	28	29	30	31			

- ◆ The X symbol (grey box) indicates no collection service due to a holiday. During weeks that observe holidays, service will resume the day after the holiday and Bertolotti will collect through Saturday of that week to avoid continued service delays. Example: If Friday is your regular pick-up day, garbage will be collected on Saturday of the holiday week.
- ◆ Recycling is collected on an every-other-week basis on the same day of the week your garbage is collected.



Special Waste Disposal Options

Household Hazardous Waste (HHW)

Stanislaus County Household Hazardous Waste Facility is located at County Center IV, 1710 Morgan Road, Modesto. Household Hazardous Waste is collected free of charge to the residents of Stanislaus County. The collection facility is open Friday and Saturday 8 am to 12 pm, excluding major holidays. For up-to-date information on dates the facility is open, please call the Household Hazardous Waste Information Hotline at (209) 525-6789.



FOG- Fats, Oils & Grease Disposal

When FOG is dumped down the drain, it forms large, thick grease balls that clog pipes. Clogged pipes can result in sewer backups and spills, create environmental problems, and damage property leading to costly repairs. FOG includes items such as cooking oils, salad dressings, sandwich spreads, meat juices, meat fat and other similar products, eventually results in sewer backups that can overflow onto streets and even into the home, damaging properties and the environment.



- Pour fats, oils and grease after it has cooled into a container, such as an empty glass jar or coffee can. Once the container is full, secure the lid and place it in the trash.
- Wipe before washing. For greasy pans, pour the grease into a container and use a paper towel to wipe out the remaining grease in the pan prior to washing.
- Use sink strainers to catch food items, then empty the strainer into the trash.
- Seal the oil. Mix liquid vegetable oil with an absorbent material such as kitty litter or coffee grounds in a sealable container before throwing it in the trash.
- Keep drains clean by pouring 1/2 cup of baking soda down the drain followed by 1/2 cup of white vinegar. Wait 10-15 minutes and then rinse with hot water.

Prescription/OTC Drug Disposal



Ceres residents can drop off old or unused prescription drugs safely and anonymously at the drop box located in the lobby of the Ceres Police Department located at 2727 Third St., Ceres. No Sharps/diabetic needles accepted at this location.

Special Waste Disposal Options

Curbside Christmas Tree Disposal

Curbside pickup for Christmas trees is available to Ceres' solid waste customers on regularly scheduled leaf & limb collection days and routes until January 9th. When the seasonal collection program ends.

Please Note:

- No flocked trees or trees longer than 4' accepted.
- Trees may be cut to meet the 4' limit and placed for collection.



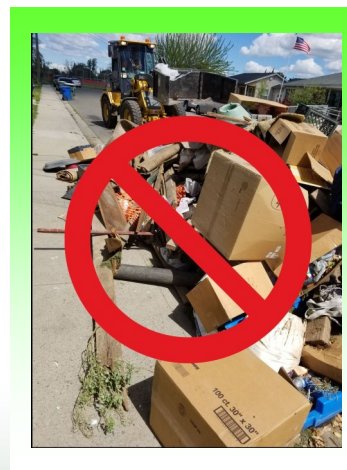
Bulky Item Pick-Up

The City of Ceres offers residents bulky item pick-up two (2) times per year. To schedule a pick-up, contact Bertolotti Disposal Service at (209) 537-1500 or visit their website at Bertolottidisposal.com.

IMPORTANT INFORMATION FOR BULKY ITEM PICK-UP SERVICE

Failure to follow the below may result in an illegal disposal citation:

- Set items out on the street 1 foot away from the curb no more than 24 hours in advance from scheduled appointment
- Do not block the sidewalks, fire hydrants, storm drains, garbage cans, or impede traffic
- No alley pickups
- Items must be placed in front of your own home (curbside on the street), 1 foot away from the curb
- Size restrictions- pile not to exceed 6'x6'
- You are responsible for your pile until it is removed



For more information on bulky item collection, visit:

ceres.gov/650/Bulky-Item-Pick-up

Leaf & Limb Collection

The City of Ceres offers residential customers leaf & limb disposal pick-up service from **October 1st until January 9th**, on an every-other-week basis. Collection of leaf & limb debris occurs on the day after the residence's scheduled recycling pick-up day.

THIS SERVICE IS NOT PROVIDED FOR APARTMENT COMPLEXES OR BUSINESSES.

The green organics cart should be utilized for yard waste before placing the remaining material in the street for collection.

PLEASE REMEMBER...

Leaf & Limb piles will not be collected unless all of the following criteria has been met:

- Limbs must be cut in lengths of four feet (4') or less and no larger than six inches (6") in diameter.
- Place loose leaves and limbs in piles at least one foot (1') away from the curb in front of your residence.
- Leaf and limb piles must not contain garbage, dirt, plastic bags, tree stumps, palm fronds, or grass clippings.

Bertolotti Disposal has leaf and limb collection service options available during the off season from January 10th to September 30th of each year. Residents can schedule a temporary collection bin for yard debris during the months that the seasonal leaf and limb program is not in operation. For more information on pricing and service specifications, contact Bertolotti Disposal at (209) 537-1500.



Illegal Disposal Reporting



Illegal disposal activities and unsightly blight is a common concern in Ceres. Old mattresses, sofas, appliances, tires, and household garbage can often be found along city streets and sidewalks. Illegal dumping is a much bigger problem than it may seem, and the impact is further reaching than you might realize.

There are several ways to report an illegal disposal site. For mobile reporting, users can download the "MyCeres" smartphone app. You may also visit the City of Ceres website at <https://www.ci.ceres.ca.us/658/Illegal-Disposal-Issues>

or call the City of Ceres Public Works Department at (209) 538-5732.

City Programs & Events

Compost and Mulch Giveaway Programs

RESIDENTIAL PROGRAM

City of Ceres residents can now pick up free compost and mulch at the River Bluff Regional Park located at 3761 E. Hatch Rd. The program is first-come, first-served, and customers must bring their own shovels and containers to collect the material.



LOCAL FARMER GIVEAWAY PROGRAM

Local farmers in the Ceres area can apply for free bulk compost to utilize for crop production. Applications can be picked up at the City of Ceres Public Works office or emailed to applicants upon request. Participants are responsible for pick-up and hauling services and the program is strictly based on availability. Call the City of Ceres Public Works Department at (209) 538-5732 or visit ceres.gov/739/Free-Compost-and-Mulch-Pick-up-for-Ceres for more info.

Free Community Disposal Event

Each year, the City of Ceres hosts a 1-day community drop off event for City of Ceres residential garbage customers to dispose of large items and appliances (no regular trash). Customers can also dispose of other special waste items such as an E-waste, mattresses waste tires. Participants must be a City of Ceres garbage customer and present their most recent utility bill and photo ID with address at the event entrance.

No loads larger than a truck (no trailers) are accepted. Visit the City of Ceres website at ceres.gov/736/Free-Community-Disposal-Event to find out more information.

